

Installation Guide

TARGIT Decision Suite

This guide supports:

TARGIT Decision Suite 2019, Update 4

© 2020 TARGIT
All rights reserved.

TARGIT software, including information contained in databases, is furnished under license, and may only be used or copied in accordance with the license agreement terms.

No part of this publication may be reproduced, translated, distributed, or transmitted in any form or by any means, including photocopying, recording, or other electronic or mechanical methods, without the prior written permission of TARGIT.

TARGIT provides this publication "as is" without warranty of any kind.

Information in this publication is subject to change without notice and does not represent a commitment by TARGIT. All statements, technical information, and recommendations related to TARGIT products are based on information believed to be reliable. However, TARGIT does not warrant or guarantee the accuracy or completeness of such information.

TARGIT

Gasværksvej 24, 2.
9000 Aalborg
Denmark

Phone: +45 96 23 19 00

Website: www.targit.com

Contents

1 Introduction	5
1.1 Guide design	5
2 TARGIT Decision Suite	6
3 System requirements	7
3.1 Firewall access	7
3.2 System recommendations	8
4 Download Installer	9
5 Default installation process	11
6 Installing the TARGIT client	12
6.1 Remote desktop/Citrix environments	13
6.2 Offline installation	13
7 TARGIT Anywhere	15
7.1 Scalable maps	15
7.2 Running TARGIT Anywhere on a separate server	15
8 Custom installation	17
9 Running TARGIT Data Discovery on a separate server	19
10 Parameters	20
10.1 InstallPackages parameter	20
10.2 InstallFolder parameter for Client Installer	20
10.3 CanManage parameter for Client Installer	20
11 Silent installation	22
11.1 Silent installation of the TARGIT client	22
12 Maintenance	24
12.1 Repair	24
12.2 Modify	24

13 Updating TARGIT Decision Suite	25
13.1 Updating client	25
13.2 Updating TARGIT InMemory Database	25
14 Backup	26
15 Services	27
16 Remove installation	28
17 Abbreviations	29

1 Introduction

This Installation Guide will assist you in installing your TARGIT BI solution. The guide supports TARGIT Decision Suite 2019, Update 4.

It focuses on TARGIT Server and TARGIT client installations. It is aimed at system administrators or others who perform installation of TARGIT components, i.e. users with a more technical and administrative approach rather than an end-users approach. As this guide is aimed at system administrators, it is assumed that you are familiar with setting up system environments and hence know, how to meet the requirements listed in "System requirements" on page 7.

Please note that this guide refers to the installation process, subsequent configuration of the TARGIT Decision Suite is managed in TARGIT Management. Please refer to the Configuration Guide for further information.

1.1 Guide design

The guide is divided into various sections, enabling you to quickly locate the information you are looking for. Notes, tips, and examples are included where applicable, these are visually displayed in boxes as depicted below:

Note: A note box provides specific information on the task at hand. Pay attention to the information in this box.

Example: An example box will provide an example of how to solve the task at hand.

Tip: A tip box will provide you with e.g. an alternative approach to the task at hand. Ignoring a tip will not have any consequences, but you might miss out on a trick that makes your task easier.

2 TARGIT Decision Suite

The TARGIT Decision Suite includes the following components:

- TARGIT Server
- TARGIT Windows client
- TARGIT Data Discovery
- TARGIT InMemory Database
- TARGIT InMemory ETL Studio
- TARGIT InMemory ETL Scheduler Service
- TARGIT InMemory Data Drivers
- TARGIT Anywhere Configuration
- TARGIT Management

and in addition:

- iOS and Android App to support TARGIT Anywhere.

You need, as a minimum, the TARGIT Server and the TARGIT Windows client in order to utilize the TARGIT Decision Suite.

Installation of the TARGIT Decision Suite is performed using the TARGIT Installer, this application will ensure proper installation of the TARGIT Decision Suite.

You can install all components from the TARGIT Decision Suite, but your license key will only enable deployment of those included in the license fee.

The App for iOS and Android must be installed from either Apple App Store or Google Play Store.

Configuration is performed in TARGIT Management. TARGIT Management is the management application for configuring the TARGIT Server and TARGIT applications. Detailed information regarding configuration of TARGIT Decision Suite can be found in the Configuration Guide.

The TARGIT Server is the central component that handles all connections to data, all queries launched by end users and enforces all setup restrictions. The TARGIT client allows you to build reports and dashboards, set schedules and notifications.

TARGIT Data Discovery can create data models based on ad-hoc data sources.

TARGIT InMemory Database is a column store database for TARGIT's InMemory service.

The TARGIT InMemory ETL Studio is a tool for extracting, transforming and loading data into the InMemory database. The TARGIT InMemory ETL Scheduler Service sets the refresh frequency of data, TARGIT InMemory Data Drivers is an add-on to ETLStudio that enables connection to multiple data sources.

TARGIT Anywhere Configuration is the installation tool for TARGIT's web application; TARGIT Anywhere. The iOS/Android App utilizes the TARGIT Anywhere web application which facilitates access to TARGIT analysis, dashboards, and reports.

3 System requirements

Before installing TARGIT Decision Suite your system must adhere to the requirements listed below.

server:

- 64 bit version of Windows server 2012 or newer.
- .NET Framwork 4.7.2 or newer.

TARGIT Windows client:

- Windows 7 SP1, Windows 8.1 or Windows 10.
- .NET Framwork 4.7.2 or newer.

For TARGIT Anywhere:

- Internet Information Services (IIS) must be installed.

If you do a manual installation of TARGIT Anywhere:

- ASP.NET Core hosting must be installed.

For TARGIT Data Discovery:

- Internet Information Services (IIS) ASP.NET 4.5 must be installed.
- WCF Activation over port and http.

For TARGIT InMemory:

Enough memory to contain the data in the dababase, at least 16GB for a base install.

In general, make sure your system environment is fully updated, i.e. operating system and any data warehouses are fully updated with the latest service packs and updates.

3.1 Firewall access

- Port 1300 and port 1301 must be open to allow a client on another machine to connect to the TARGIT Server.
- For TARGIT InMemory connections port 5060 must be open.
- For TARGIT Data Discovery connections port 9095 must be open.
In case you run TARGIT Data Discovery on another server than the TARGIT Server port 9090 must also be open for database communications.

3.2 System recommendations

server:

- It is recommended that cubes run on a Solid State Drive (SSD).
- It is recommended that the TARGIT Windows client is installed on the server.

TARGIT InMemory Database

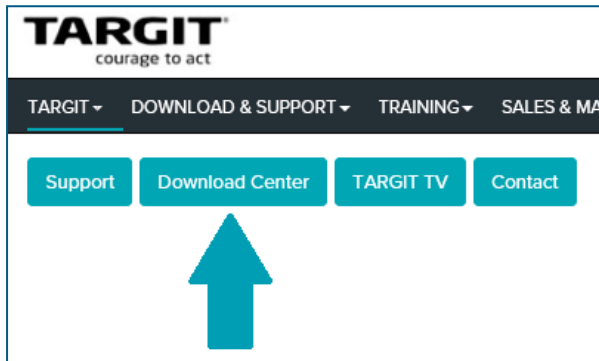
- It is recommended that the InMemory database files are stored on an SSD drive if frequent updates are performed.

4 Download Installer

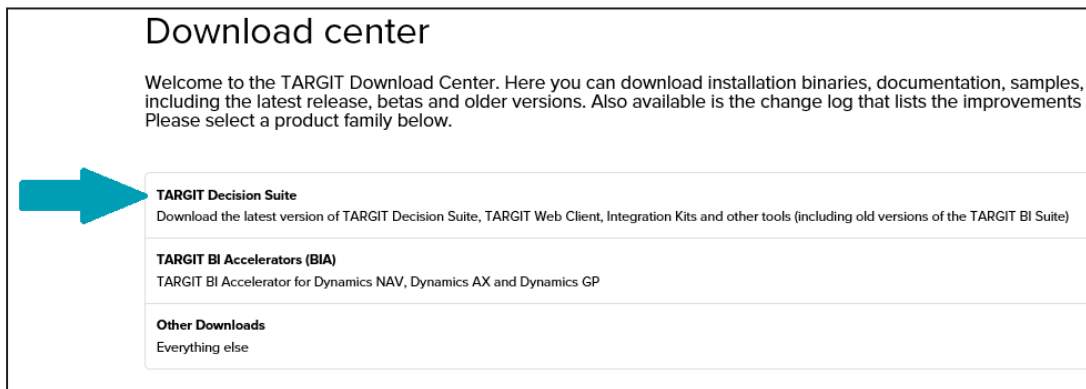
In order to install the TARGIT Decision Suite you download an Installer from the TARGIT download center. The Installer allows you to install and configure all components in the suite.

To download the Installer do this:

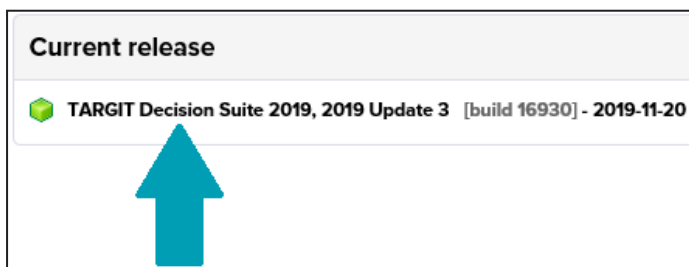
1. Go to the TARGIT portal using this link (login required): <https://portal.targit.com>
2. Click on 'Download Center' in the upper left-hand corner:



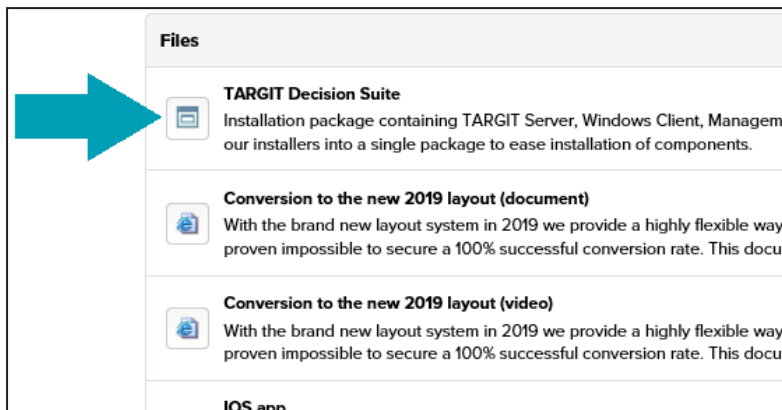
3. Select 'TARGIT Decision Suite':



4. Select version.
5. Click on the release in the 'Current release' box:



6. Click on the 'TARGIT Decision Suite', this will download the Installer.



You can either run or save the TARGIT Decision Suite Installer file.
The default file name is 'TARGITSetup.exe'.

Follow the installation process described in either "Default installation process" on the next page or "Custom installation" on page 17.

5 Default installation process

This section will take you through a default clean installation process, please note that you need your license key to validate the installation.

If you do not have an existing license key you can request a demo license during the installation process. The demo license key is valid for a 30 days trial.

It is also possible to continue the installation without a license key, in this case you apply it after the installation. Note that the TARGIT Server does not work until you apply a valid license key. You apply the license key in the TARGIT Management application.

A default installation will use:

C:\Program Files\TARGIT as the installation path for the TARGIT Decision Suite and

C:\ProgramData\TARGIT as the installation path for data.

1. Download the Installer (see "Download Installer" on page 9).
2. Open the Installer, start the installation process and proceed with accepting the End User License Agreement.
3. Select the '*Use existing license key*' option, insert and validate your license key. Alternatively, request a demo license key or continue without a license key.
4. Next step is to select the installation path for the TARGIT Decision Suite. As this is a default installation just click '*Next*'. This will display a list of the TARGIT Decision Suite components. In a default installation all components are preselected, but you can deselect those you do not wish to install. As a minimum you need the TARGIT Server, the TARGIT client and most likely TARGIT Anywhere Configuration. Click '*Install*' to start the installation.

Once the installation is finished you are asked to open the TARGIT Anywhere Configuration to complete the installation, do so by clicking the '*Exit*' button, this will display the TARGIT Anywhere Configuration screen.

5. On the TARGIT Anywhere Configuration screen click the '*Check for update*' button. If an update is available use the '*Install update*' option, otherwise close the window to finalize the installation process. A restart may be required to finish the setup.

After the installation is completed shortcuts for the TARGIT applications are available in Windows Start menu.

6 Installing the TARGIT client

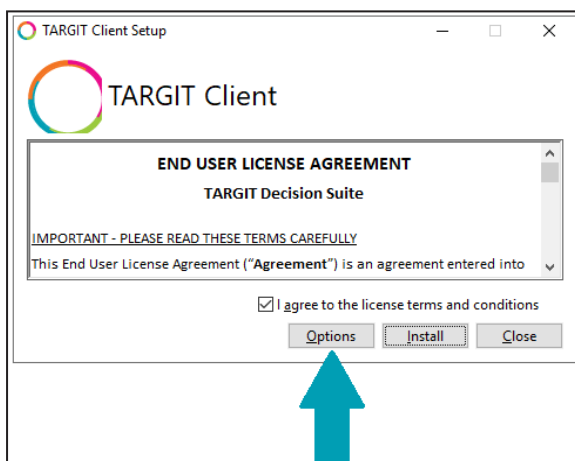
The TARGIT Decision Suite includes a Client Installer, it is a small application that must be installed on all client machines in order to run either the TARGIT client or the TARGIT Management application. The Client Installer automatically launches the correct client (32-bit or 64-bit) depending on the operating system.

The Client Installer is a one-time installation, it is automatically updated when the TARGIT Server is updated.

The Client Installer file name is 'ClientInstall.exe'.

To install the Client Installer on a client machine do this:

1. Access the Installer from the TARGIT Server with this command:
'https://[server]:1301/install'.
2. Run the Installer and accept the End User Licence Agreement.
3. If the user requires access to TARGIT Management this must be enabled in '*Options*'.
By default the client does not have access to TARGIT Management.



4. Click '*Install*'.

When finished, the Client Installer can be launched from the Windows Start menu, the shortcut is 'TARGIT'.

In order to launch the TARGIT Windows client or the TARGIT Management client the Installer requires the TARGIT Server name. The server name can be provided in two different ways:

1. Open the application and manually enter the server name, then click '*Log In*' for accessing the TARGIT Windows client or click '*Manage Server*' in the lower right-hand corner for accessing the TARGIT Management client.
2. Use the following command to open the application:
 - A. 'TARGIT://[server]/' to open the Windows client
 - B. 'TARGIT://[server]/manage' to open the TARGIT Management client.

When the Client Installer has been configured with the server name a shortcut is created in Windows Start. This shortcut is named 'TARGIT([server]'. Clicking this shortcut opens the Windows client and connects to the server listed in the brackets.

You can run multiple clients on the same client machine, simply provide the Client Installer with another server name.

Tip: How to make a clean client install.

Install the Client Installer as described in "Installing the TARGIT client" on the previous page. Once installed, distribute an email with a link to the server (TARGIT://[server]) to all relevant end-users. When the user clicks on the link the Client Installer connects to the server and a shortcut is created in Windows Start.

The user can now use this shortcut in the future.

Note: Silent installation is also possible, please refer to "Silent installation " on page 22.

6.1 Remote desktop/Citrix environments

If you run the TARGIT Decision Suite client in a remote desktop/Citrix environment you need to follow the instructions below:

1. Access the Client Installer as described on the previous page ('https://[server]:1301/install').
2. Run the downloaded Installer.
3. Run 'Start TARGIT://[server]/install' from the command prompt.

The Client Installer automatically detects if it is running on a remote desktop/Citrix server and avoids checks for updates every time a user logs in.

6.2 Offline installation

We recommend that you use the standard Installer which provides automatic update of the client application, it is, however, possible to do a manual installation of the client application using an offline Installer.

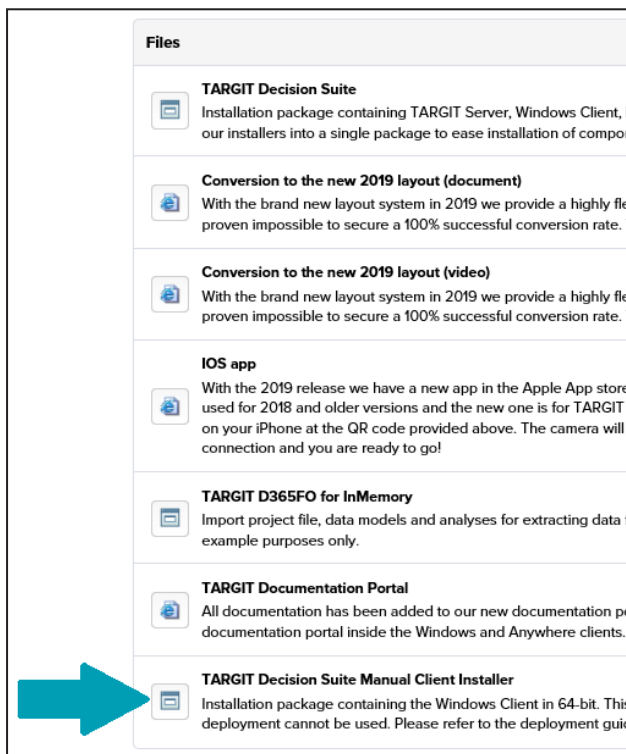
The offline Installer prevents automatic updates, i.e. the connection to the TARGIT Server will not work if the TARGIT Server is updated. Each TARGIT client application must be upgraded manually to match the TARGIT Server version before it can be used.

Note: You must select deployment method and keep to it, you cannot install the TARGIT client using the automatic deployment method and then upgrade using the offline Installer.

Changing deployment method requires you to uninstall the TARGIT client.

The offline Installer can be downloaded from the TARGIT download center. To download the offline Installer do this:

1. Follow step 1-5 in the "Download Installer" on page 9.
2. Click on the '*TARGIT Decision Suite Manual Client Installer*', this will download the offline Installer.



3. Run the Installer.

7 TARGIT Anywhere

TARGIT Anywhere is installed via the TARGIT Decision Suite Installer just like the other components. In a default installation, TARGIT Anywhere is installed on the TARGIT Server.

The App for iOS and Android must be installed from either Apple App Store or Google Play Store. Search for 'TARGIT', you will find two Apps: 'TARGIT Decision Suite' and 'TARGIT Touch'. Select and install the 'TARGIT Decision Suite' App.

TARGIT Anywhere can be launched from a browser, default path is: 'http://[server]/Anywhere'.

If you wish to run TARGIT Anywhere on an other server than the TARGIT Server you need to configure TARGIT Anywhere. Please see below for further Information.

7.1 Scalable maps

If you plan to run scalable maps (GIS) in your TARGIT Anywhere application you need to install and run the Scalable Maps Installer to ensure proper usability. This is also the case if you upgrade TARGIT Decision Suite from a previous version where saved documents include scalable maps.

The Scalable Maps Installer component is not installed by default due to size and installation time.

The 'Scalable Maps Installer' must be installed and executed on the server as well as client machines that requires access to scalable maps.

To install and run the Scalable Maps Installer do this:

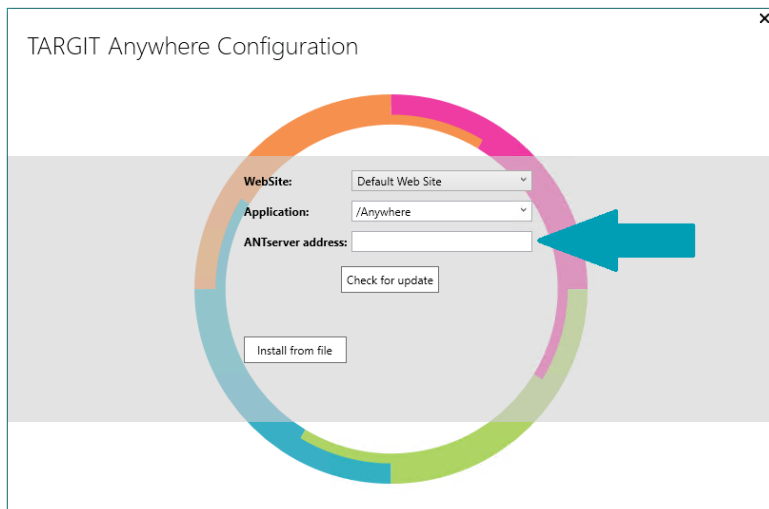
1. Access the Installer from the TARGIT Server with this command:
'https://[server]:1301/installgis'.
2. Click '*Install*' and close the Installer when the installation is completed.

7.2 Running TARGIT Anywhere on a separate server

Note: Please observe the requirements for TARGIT Anywhere listed in "System requirements" on page 7.

Running TARGIT Anywhere on another server than the TARGIT Server requires you to configure TARGIT Anywhere; you do this with the TARGIT Anywhere Configuration tool.

1. Start by installing the 'TARGIT Anywhere Configuration' component on the required server.
(see also "Download Installer" on page 9, "Default installation process" on page 11, and "Custom installation" on the next page for further information).
2. In the TARGIT Anywhere Configuration window, you need to set the '*ANTserver address*' to the TARGIT Server IP address/server name, see figure below.



Once you have pointed to the correct server click the '*Check for update*' button. If an update is available use the '*Install update*' option, otherwise close the window to finalize the installation process.

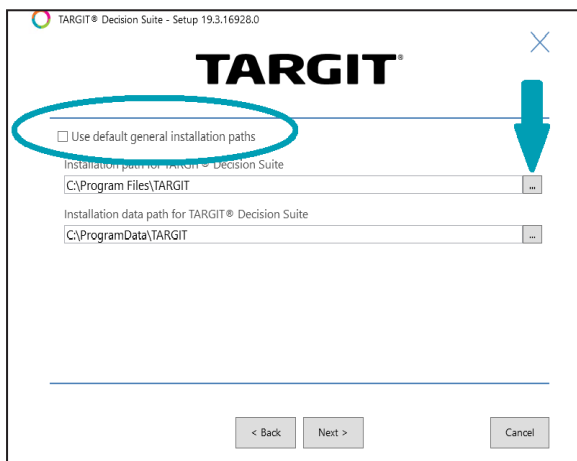
3. You can now launch TARGIT Anywhere from a browser, the path is:
'[http://\[server where Anywhere is installed\]/Anywhere](http://[server where Anywhere is installed]/Anywhere)'.

8 Custom installation

If you wish to perform a custom installation, i.e. not using the default settings, the Installer provides you with the option to do so. You can customize both the installation paths for the TARGIT Decision Suite and the paths for the various components.

To do a custom installation follow step 1+2 in the "Default installation process" on page 11, then follow the steps below:

1. Deselect the '*Use default general installation paths*'. Once this is done you can browse for new installation paths by using the browse buttons to the right.



Once you have selected new paths proceed by clicking '*Next*'.

2. Next step is to select and configure the components. Select a component, then configure it by clicking the cogwheel icon located on the right-hand side of the window. You can configure all but the TARGIT client and TARGIT InMemory Data Drivers components.

You can find a description of each component configuration below:

A. TARGIT Server

To configure the TARGIT Server deselect the '*Use default settings*' and perform your own configuration of the application files and the data files using the browse button to the right.

You can deselect installation of the standard TARGIT Demo Data if you wish, however, we recommend that you install the Demo Data.

B. TARGIT Data Discovery

Configuration of TARGIT Data Discovery is divided into four tabs: '*General*', '*Data Manager*', '*Language*', and '*TARGIT Server*'. To configure any settings first deselect the '*Use default settings*' box.

I. General

This tab enables you to modify the installation path for the application files.

II. Data Manager

This tab enables you to specify the URL and port for the Data Manager interface. We do, however, not recommend that you change the port. If you do so, ensure that the port is open in the firewall.

III. Language

Choose the appropriate locales for your environment. Default setting is English, if required, add more locales from the list. TARGIT Data Discovery will iterate over the ordered list when parsing data.

IV. TARGIT Server

This tab enables you to modify the server that TARGIT Data Discovery connects to. If TARGIT Data Discovery is installed on the same computer as the TARGIT Server you should not change the default settings.

In case the TARGIT Data Discovery component is not installed on the TARGIT Server please refer to "Running TARGIT Data Discovery on a separate server" on the next page.

C. TARGIT InMemory Database

To modify the settings you must deselect the '*Use default settings*' box. You can then use the browse buttons on the right to modify the installation and data path for the TARGIT InMemory Database.

You can also enter a custom password for the TARGIT InMemory Database server. The password is required when setting up a connection in TARGIT Management.

Default password is Pa\$\$W0rd (PAPA alpha Dollar Dollar WHISKEY Zero romeo delta).

D. TARGIT InMemory ETL Studio

You can modify the installation path for TARGIT InMemory ETL Studio by using the browse button, remember to deselect the '*Use default settings*' box.

E. TARGIT InMemory ETL Scheduler Service

To modify the settings you must deselect the '*Use default settings*' box. You can then use the browse buttons on the right to modify the installation and data path for the TARGIT InMemory ETL Scheduler Service.

F. TARGIT Anywhere Configuration

You can modify the installation path for TARGIT Anywhere Configuration by using the browse button, remember to deselect the '*Use default settings*' box.

Note, that this is the installation path for the configuration tool, not the TARGIT Anywhere website.

3. Once you have performed the custom configurations you require click the '*Install*' button. When the installation is finished you are asked to open the TARGIT Anywhere Configuration (if you included this component) to complete the installation, do so by clicking the '*Exit*' button, this will display the TARGIT Anywhere Configuration screen.
4. On the TARGIT Anywhere Configuration screen click the '*Check for update*' button. If an update is available use the '*Install update*' option, otherwise close the window to finalize the installation process.

After the installation is completed shortcuts for the TARGIT applications are available in Windows Start menu.

10 Parameters

10.1 InstallPackages parameter

You can use the parameter 'InstallPackages' to install selected components. This option can only be used at clean installations, otherwise the parameter settings are ignored.

Installation components that can be selected are: server, Client, DataService, Anywhere, InMemory, ETLScheduler, ETLStudio, and DataDrivers.

To launch the 'InstallPackages' parameter open a command prompt and type:

```
TARGETSetup.exe InstallPackages=[components you wish to install]
```

Example: TARGETSetup.exe InstallPackages=Server,Client,Anywhere

Note: Do not use space. Use comma to separate the required packages. The text is not case-sensitive.

10.2 InstallFolder parameter for Client Installer

If client files need to be located elsewhere than default the 'Client Installer' can be installed using the 'InstallFolder' parameter, see example below:

Example: ClientInstall.exe InstallFolder=D:\

Note: The 'InstallFolder' parameter is *case sensitive*.

10.3 CanManage parameter for Client Installer

If the user requires access to TARGIT Management the 'CanManage' parameter can be used, see example below:

Example: ClientInstall.exe CanManage=1

Note: The 'CanManage' parameter is *case sensitive*.

To see a list of additional standard parameters please launch the Client Installer with the '/?' parameter from the command prompt, see below:

```
'C:\ProgramData\TARGITANTServer\ClientUpdate\ClientInstall.exe /?'
```

11 Silent installation

Silent installation is a convenient way to streamline the installation process without requiring any user interaction.

You can use the parameter 'InstallPackages' to install selected components. This option can only be used at clean installations, otherwise the parameter settings are ignored.

Installation components that can be selected are: server, Client, DataService, Anywhere, InMemory, ETLScheduler, ETLStudio, and DataDrivers.

To launch the 'InstallPackages' parameter in silent mode open a command prompt and type:

```
TARGETSetup.exe InstallPackages=[components you wish to install] /quiet
```

Example: TARGETSetup.exe InstallPackages=Server,Client,Anywhere /quiet

Note: Do not use space. Use comma to separate the required packages. The text is not case-sensitive.

11.1 Silent installation of the TARGIT client

You can install the TARGIT client in silent mode. The file name is 'ClientInstall.exe'.

Access the Installer from the TARGIT Server with this command: 'https://[server]:1301/install'.

If client files needs to be located elsewhere than default the 'Client Installer' can be installed using the 'InstallFolder' parameter, see example below:

Example: ClientInstall.exe InstallFolder=D:\

Note: The 'InstallFolder' parameter is *case sensitive*.

If the user requires access to TARGIT Management the 'CanManage' parameter can be used, see example below:

Example: ClientInstall.exe CanManage=1

Note: The 'CanManage' parameter is *case sensitive*.

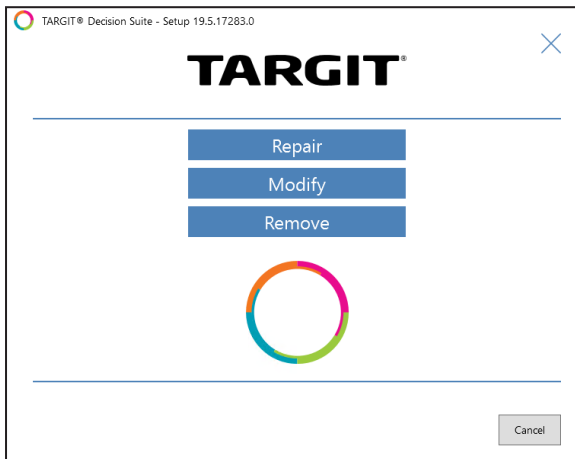
To see a list of additional standard parameters please launch the Client Installer with the '/?' parameter from the command prompt, see below:

```
'C:\ProgramData\TARGIT\ANTServer\ClientUpdate\ClientInstall.exe /?'
```

12 Maintenance

You can use the Installer to repair or modify the TARGIT Decision Suite installation. To perform any maintenance tasks simply locate and double-click the Installer.

When you open the Installer application you will see three options: *'Repair'*, *'Modify'*, and *'Remove'*. For maintenance tasks use the *'Repair'* or *'Modify'* options.



If you wish to remove the entire TARGIT Decision Suite installation see "Remove installation" on page 28.

12.1 Repair

If you need to repair your TARGIT Decision Suite installation use the *'Repair'* option. This will re-install the components in your TARGIT Decision Suite. Any custom installation settings will be kept. You must reboot the computer after a successful repair.

12.2 Modify

If you need to add or remove one or more components you can use the *'Modify'* option. Once you have accepted the End User License Agreement you will see a list of all available components. Components already installed will have a check mark, those not installed will be empty.

- To add a component select it on the list.
- To remove a component deselect it on the list.

You can customize the installation for those components that is not already installed by clicking the cogwheel to the right. (see also "Custom installation" on page 17).

When you click *'Next'* you will see a list of all the modifications you have made, click *'Modify'* to start the process.

13 Updating TARGIT Decision Suite

When updating the TARGIT Decision Suite you need to download the TARGIT Decision Suite Installer associated with the update. Once you run the new Installer it will detect that an older version of the suite exists, and you will be presented with the option to update. (this is the only option, you cannot do anything else).

After clicking '*Update*' you will see a list of all detected components, once you click '*Update*' these will be updated to the new version. You need to reboot the computer to complete the installation.

Note: If you update from a version prior to 2019 please pay attention to section "Updating client" below and "Updating TARGIT InMemory Database" below.

13.1 Updating client

Updating a client version older than TARGIT Decision Suite 2018 requires the old version to be uninstalled before installing the new version. After successful uninstall, use the Client Installer to install the new version.

13.2 Updating TARGIT InMemory Database

If you update the TARGIT InMemory Database from a version prior to 2019 you need to add a line to the configuration settings to secure a connection to a valid TARGIT Server.

Follow the instructions below to achieve this:

1. Open 'C:\Program Files\TARGIT\TARGIT InMemoryDB\targitdb.ini'
2. Add 'licenseServer=https://[server]:1301/' to the file.
3. Save and close.

14 Backup

Below is a list of folders that, as a minimum, should be backed up.

Folder	Default location
ANTServer	C:\Program Files\TARGIT\ANTServer C:\ProgramData\TARGIT\ANTServer
VFS	C:\ProgramData\TARGIT\ANTServer\VFS
Settings	C:\ProgramData\TARGIT\ANTServer\Settings
Exported Reports	C:\ProgramData\TARGIT\ANTServer\Exported Reports

If the system database is located elsewhere, e.g in a SQL database, this too should be backed up.

15 Services

Below you will find a list of the services related to TARGIT Decision Suite:

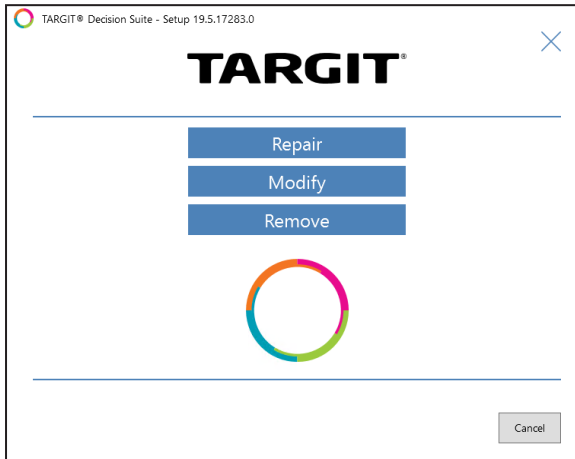
- TARGIT Server
servername ANTserver. Manages communication between the data warehouse and the clients.
- TARGITClient Update Service.
This installs new versions of the TARGIT client when available.
- TARGIT Data Service.
- TARGIT InMemory Scheduler Service.

For all services, the startup type is set to "Automatic" and recovery is set to "Take no action". If you wish to alter this go to Windows Services and make the required changes.

16 Remove installation

You can use the Installer to remove the TARGIT Decision Suite installation.

Locate and open the Installer. You will see three options: *'Repair'*, *'Modify'*, and *'Remove'*.



If you wish to remove TARGIT Decision Suite entirely use the *'Remove'* option. You will see a list of all the components, and once you click *'Remove'* the Installer application will remove the entire TARGIT Decision Suite installation.

This should only be done if you want to remove the installation completely, otherwise use the *'Modify'* option to remove one or more components from the installation, see "Maintenance" on page 24.

Please note that removing the TARGIT Decision Suite installation does not delete all files related to the installation. If you wish to delete everything, you must manually delete the folders where the installation files are located.

Default folders are:

- C:\Program Files\TARGIT
- C:\Program Files (x86)\TARGIT
- C:\ProgramData\TARGIT.

It is, of course, also possible to remove TARGIT Decision Suite using the Windows Control Panel application.

17 Abbreviations

GIS	Geographic Information System
IIS	Internet Information Services
SSD	Solid State Drive
UI	User Interface