

Excel - InMemory Assembly

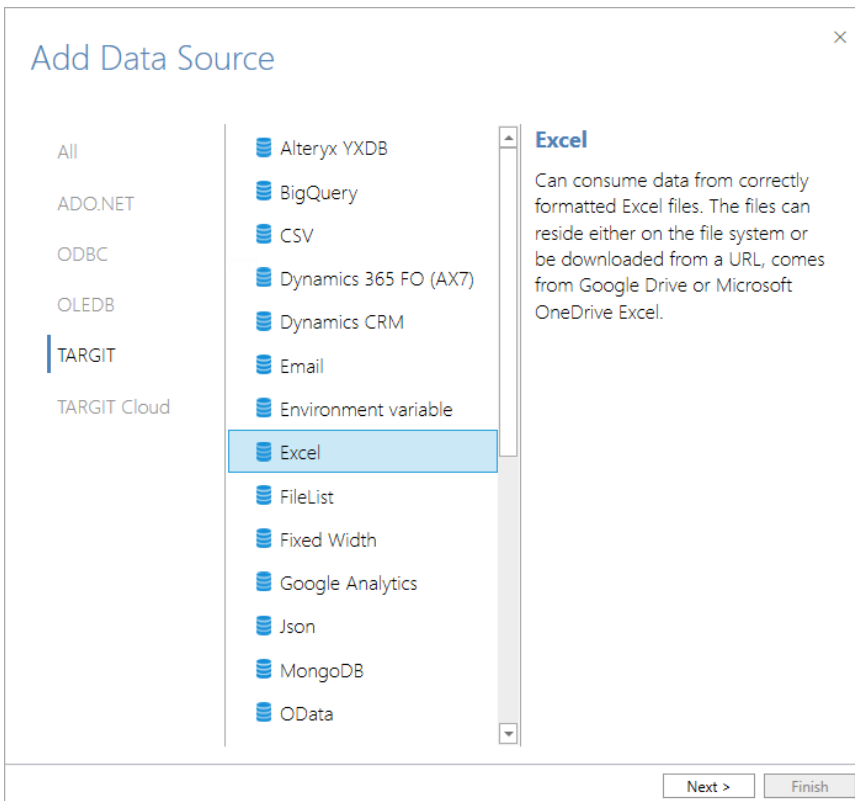


Excel - InMemory Assembly

The Excel assembly can consume data from correctly formatted Excel files. I.e. from files with data in a pivot table structure.

Adding the Data Source

The Excel assembly is a 'Files' data source.



Add Data Source

Name

Assembly location ☐ Local ☒ Server

File type ☒ Local file ☐ Url

File ...

Ignore empty values ☐

Detection rows count

Skip lines

Has headers ☒

Load as string ☐

Connection string

```
'TARGIT.Excel.ExcelConnection'
'ignoreemptyvalues=false;datasource=;detectionrowscount=100;skiplines=0;hasheaders=True;loadasstring=false'
```

[Change connection string](#)

[< Back](#) [Finish](#)

Name

Enter a unique name for this data source. This is the name of the data source as it will appear in the Data Sources list in TARGIT Data Discovery.

Assembly location

Select an assembly location:

- **Local.** Use this option if you have a special assembly or an updated assembly that hasn't been installed on the server.
- **Server.** Use this option in most cases. The assemblies are normally installed on the server and used from there.

File type

Select a type according to the accessibility of the data source:

- **Local file.** Use this option if your data source is accessible on a hard drive or a network drive through a file explorer. Enter, or browse, the path of the file, e.g. "C:\Temp\CountryLatLong.xlsx".
- **Url.** Use this option if your data source is accessible through http:// or https:// protocols. Enter the Url for accessing this data source, e.g. <https://github.com/wp-content/uploads/2019/04/fsi-2019.xlsx>

Ignore empty values

Check this option if your data contains empty rows that should be ignored. E.g., this could be empty rows that has been deliberately added between the headers and the actual data, at the end of the data rows or somewhere in between.

Detection rows count

This is the number of rows, counted from first row, that will be examined to detect proper data types of the columns.

Skip lines

Skips the first X rows and starts loading data from the next row.

Has headers

Check this option if your sheet has headers. If unchecked, columns will loaded as "Column1, Column2, etc."

Load as string

Use this option if you want to skip the automatic data type detection and load all columns as String data type columns.

Connection string

The connection string is auto-generated from the other settings and is usually used as such. However, you have an option to change the connection string and thereby further customize your settings.