

CSV - InMemory Assembly

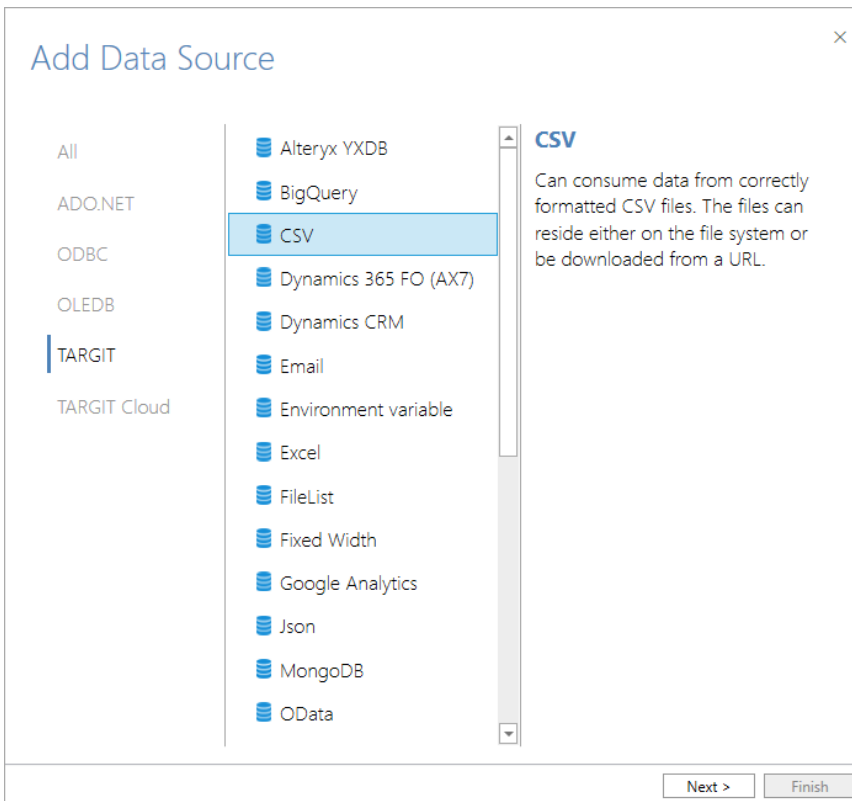


CSV - InMemory Assembly

The CSV assmebly can consume data from correctly formatted CSV files.

Adding the Data Source

The CSV assembly is a 'TARGIT' data source.



Add Data Source

Name

Assembly location
☐ Local
☒ Server

File type
☒ Local file
☐ Url

Delimiter

Load as string
☐

Has headers
☐

Detection rows count

Encoding

Culture

Connection string

'TARGET.CSV.CsvConnection'
'HasHeaders=false;loadasstring=false;type=local;delimiter=.;encoding=Windows-1252;culture=en-US;detectionrowscount=100;'

Please note that selection of input CSV file is done in the select command, e.g. `SELECT * FROM [c:\csvfiles\budget.csv]`

< Back

Finish

Name

Enter a unique name for this data source. This is the name of the data source as it will appear in the Data Sources list in TARGIT Data Discovery.

Assembly location

Select an assembly location:

- **Local.** Use this option if you have a special assembly or an updated assembly that hasn't been installed on the server.
- **Server.** Use this option in most cases. The assemblies are normally installed on the server and used from there.

File type

Select a type according to the accessibility of the data source:

- **Local file.** Use this option if your data source is accessible on a hard drive or a network drive through a file explorer. Enter, or browse, the path of the file, e.g. "C:\Temp\CountryLatLong.csv".
- **Url.** Use this option if your data source is accessible through http:// or https:// protocols. Enter the Url for accessing this data source, e.g. <https://github.com/wp-content/uploads/2019/04/fsi-2019.csv>.

Delimiter

Select the field delimiter that has been used in the CSV file. If you select 'Other', you can enter a custom delimiter.

Load as string

Use this option if you want to skip the automatic data type detection and load all columns as String data type columns.

Has headers

Check this option if your sheet has headers. If unchecked, columns will loaded as "Column1, Column2, etc."

Detection rows count

This is the number of rows, counted from first row, that will be examined to detect proper data types of the columns.

Encoding

If necessary, select the encoding with which the CSV file has been saved.

Culture

Enter the proper culture code to ensure correct loading of dates, numbers with decimals and thousand separators etc.

Culture code examples:

- en-US (English, United States)
- en-GB (English, United Kingdom)
- de-DE (German, Germany)
- da-DK (Danish, Denmark)

Connection string

The connection string is auto-generated from the other settings and is usually used as such. However, you have an option to change the connection string and thereby further customize your settings.