

SQL Server - InMemory Assembly

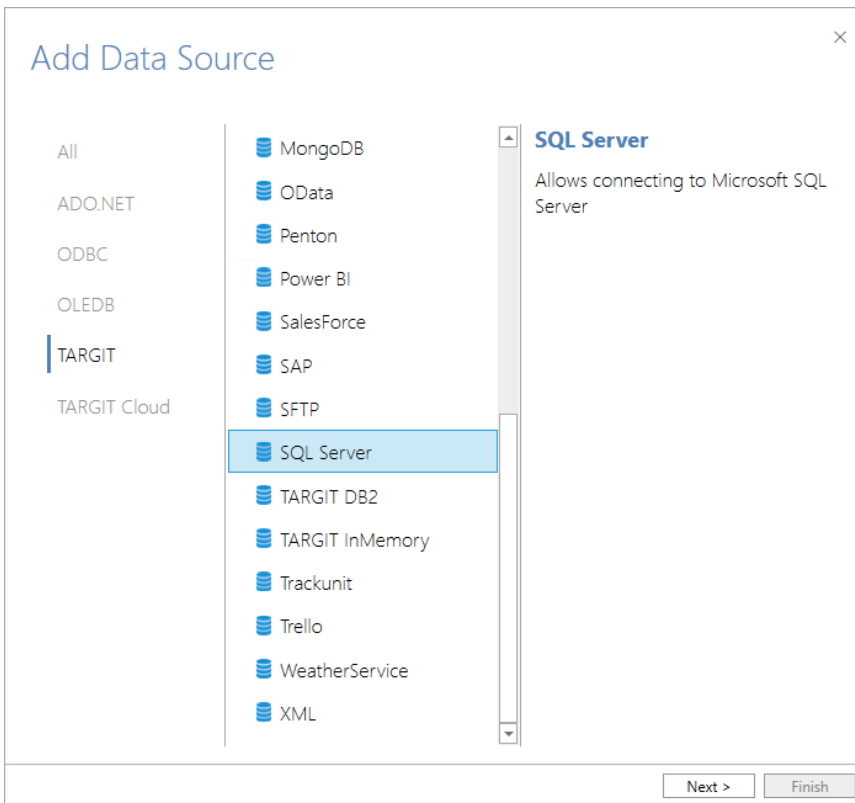


SQL Server - InMemory Assembly

The SQL Server assembly can connect to a Microsoft SQL Server database and read data from the available tables.

Adding the Data Source

The SQL Server assembly is a 'TARGIT' data source.



Add Data Source

Name

Server

Windows authentication ☒

User Name

Password

Database

Connection string

Persist Security Info=False;Data source=localhost;Initial Catalog=Stage;Integrated Security=SSPI

[Change connection string](#)

Name

Enter a unique name for this data source. This is the name of the data source as it will appear in the Data Sources list in TARGIT Data Discovery.

Server

Enter the name of the server hosting the SQL Server you would like to connect to.

Use Windows Authentication

If checked, you must make sure that the service account running the TARGIT InMemory Scheduler Service is an account that has access to the SQL Server.

If unchecked, you must provide username and password of an account that has access to the SQL Server.

Database

Once server name and account information have been validated, you will be able to look up and select a database from the drop down list. You may need to click the 'Update' button before the drop down list is populated.

Connection string

The connection string is auto-generated from the other settings and is usually used as such. However, you have an option to change the connection string and thereby further customize your settings.